

T *rackless*

V E H I C L E S

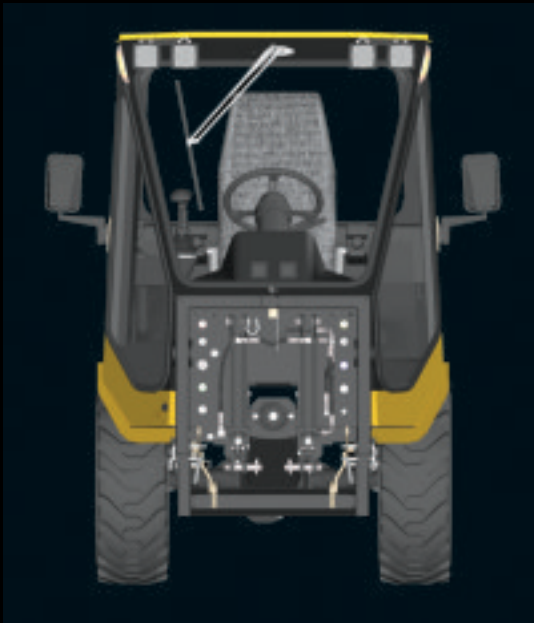


Series MT6 - Municipal Tractor



*Advanced design for maximum
productivity, safety and comfort
... from the leader in the municipal tractor field*

AN INSIDE LOOK



Front View

Every Series MT6 tractor includes:

- 6 – Low volume hydraulic quick couplers
- 2 – High volume hydraulic quick couplers
- 2 – Optional high volume hydraulic quick couplers
- 1 – Water coupler for dust control spray systems

Visibility where it counts. A larger windshield and larger side windows improve overall visibility. The large front corner windows allow the operator to keep a close eye on the ends of the snowplow, mower wings, etc. when working up close to a wall, tree, post, fire hydrant or other obstruction.

Joystick

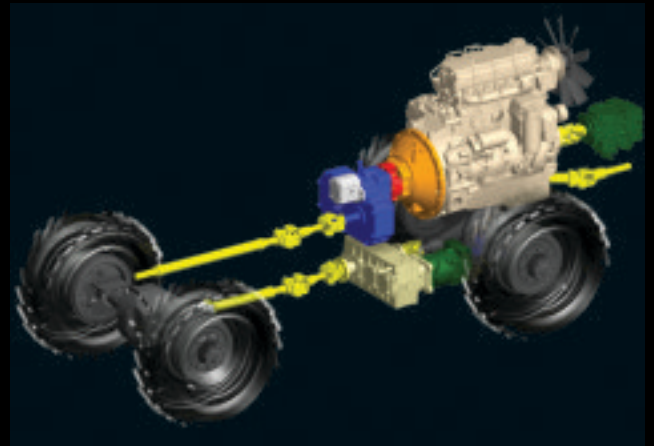
The Trackless joystick was carefully designed to give the operator very smooth control over all of the various Trackless attachments. A special free-floating arm rest allows your arm to move freely when operating the joystick.



Trackless Series MT6

A generation ahead of all others best describes the Trackless Series MT6 municipal tractor. State of the art electronics, joystick control, the most advanced drive system available, and inclusion of every possible design feature to satisfy the operator all contribute to achieving maximum productivity.

AT THE LEADER



Powertrain Components

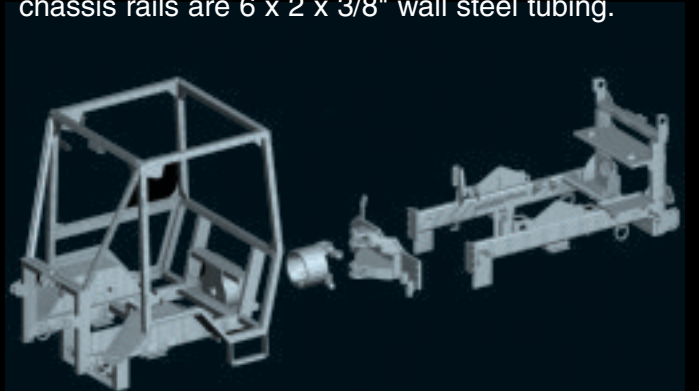
Beneath the skin, the MT6 is tough, powerful and dependable. The main powertrain components consist of a 115 HP Cummins diesel, Sauer Danfoss hydrostatic system, Dana axles and Twin Disc PTO clutch.

Fuel Efficiency

A simple flip of a switch drastically reduces fuel consumption. While in travel mode, the operator simply drives the tractor exactly like a car, pushing on what appears to be the gas pedal. This controls engine r.p.m., like it does in a car, but also strokes the hydrostatic transmission making the vehicle move. This avoids the age-old problem of hydrostatic tractors having the engine screaming at high r.p.m., wasting fuel. Driving the tractor, plowing snow, etc. can all be accomplished while in travel mode. The fuel savings alone will easily pay for the price difference between the Trackless MT6 and a less expensive tractor with old technology. Only if and when it is necessary to operate a PTO driven attachment such as the snowblower does the tractor need to operate at full r.p.m. Flip the rocker switch to work mode and set your throttle to the desired r.p.m. At this point the pedal will only stroke the transmission to move the vehicle.

Cab and Chassis Structure

The ROPS cab and front frame are one weldment creating a stronger overall structure. The rear chassis rails are 6 x 2 x 3/8" wall steel tubing.



Municipal Tractor

Today, hundreds of municipalities from small villages to large cities utilize from 1 to 60 MTs. If after reviewing the following pages you would like to discuss or have demonstrated any of the Trackless product line, please contact us directly by telephone, e-mail or through our website at www.tracklessvehicles.com

Radiator Access

Not only does the rear grill screen out grass clippings but it also hinges open to access the radiator for periodic cleaning.

Engine Access

The MT6 engine compartment has excellent access for daily checks by way of four hinged side doors and a hinged top hood.

All Steel Hoods

To withstand the elements and rough nature of the work the MT6 is designed for, all hoods, fenders and exterior panels are heavy gauge steel.

Fuel Reservoir

The hydraulic oil and fuel reservoirs are located above the frame rails, in the center of the tractor for protection and safety reasons. The 27 gallon (104 litre) fuel capacity allows a full shift.

Operator Satisfaction

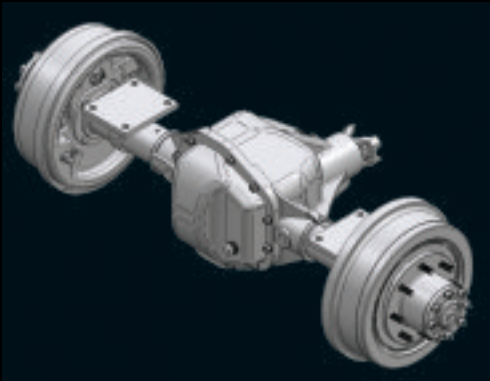
Customer input and suggestions helped us develop what we consider the most ergonomic and user-friendly MT we have ever produced. However, don't take our word for it, climb into the seat and take the MT6 for a spin. We think you will agree that the MT6 is the most comfortable, well equipped and smooth to operate tractor in its class.





Rear PTO and Rear 3-Point Hitch

One of the more popular options available is the rear 540 r.p.m. PTO and rear 3-point hitch. Many customers utilize rear 3-point hitch attachments that they already own, such as a rotovator, rotary cutter or flail mower as shown above. Since the rear PTO is driven mechanically and not hydraulically, full PTO HP is available to the implement without having to worry about overheating the hydraulic oil. As with the front PTO, the rear disengages automatically if the operator leaves the seat.



Ultimate Traction

The front and rear axles have limited slip differentials which provide excellent traction under normal circumstances. However, if you desire the ultimate in traction, electric locking differentials are available as an option. The front, rear or both can be engaged for use in low gear. With this option, the axle still has the limited slip feature when the electric lockers are disengaged. Having both limited slip and electric lockers is the ultimate.



50" - 80" Snowblowers



The Trackless Snowblower is a highly efficient, two stage, twin auger unit that has no equal in removing snow from sidewalks.

It is available in four widths; 51 inch, 60 inch, 70 inch and 80 inch. All will accept either a sidewalk chute or a quick change truck loading chute. Many municipalities utilize both chutes with their snowblower. After clearing their sidewalks, they change to the truck loading chute to load windrowed snow from the street or from cul de sacs. In both cases, the manoeuvrability and physical size of the MT and snowblower are less apt to create traffic congestion than larger snowblowers. An average loading time for the MT and snowblower is seven yards per minute.

Overall heavy duty construction includes 3/8 inch-thick side plates, double wall impeller housing and a 15 inch diameter bearing assembly for smooth, accurate chute rotation. High strength, low alloy steel augers with ice picks and a heavy duty balanced impeller, easily handle the toughest snow conditions.

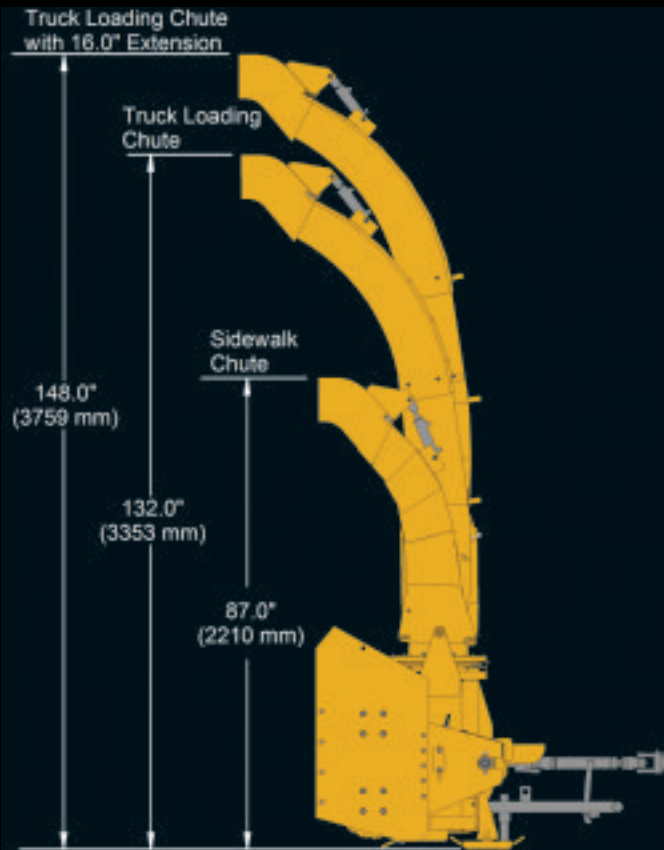
The snowblower is manufactured by Trackless Vehicles to ensure that the quality and service parts availability is equal to that of the MT.

Positive and accurate steering of the snowblower in confined areas and around obstructions is due to the articulated steering of the MT. The ability to move the snowblower sideways by simply turning the steering wheel allows the operator to safely approach any obstruction.

For further evaluation, a demonstration may be arranged.

Specifications

Housing: 51" wide x 38" high with 3/8" end plates.
Augers: 2 - 13" diameter spiral with ice picks.
Impeller: 6" x 24" - 4 blade.
Impeller housing liner: Two-piece (replaceable).
Turntable: Ball bearing.
Chute rotator: Hydraulic motor.
Chute deflector: Hydraulic cylinder controlled.
Cutting edge: 6" x 3/8" hardened (reversible).
Shear bolts: On auger drive and main PTO drive.
Adjustable cutting height: Using top link.
Quick change truck loading chute: 11' clearance.
Weight: 1,050 lbs.
HP rating: 125.



50" - 80" Snowblowers



The Snoquip XX high output snowblower, shown below, features a 28 inch ribbon type auger and 28 inch diameter, 11 inch wide 5-blade impeller. This snowblower outperforms all others in heavy wet snow. It is also extremely aggressive when cutting into frozen banks and casts further than other snowblowers in this size range. It is available in 51 inch and 79 inch widths and is available through your authorized Trackless dealer.



5 Position Folding V Plow



Many municipalities have chosen the 5 Position Folding V Plow for their sidewalk maintenance program. As shown in the pictures below, the operator can change from V to angle or scoop type plowing as conditions or requirements change.

Specifications

Overall length: 57".
 Width in scoop position: 47".
 Width in V position: 53".
 Double acting hydraulic cylinders: 2.
 Outside skid shoes: 2.
 Center skid shoe: 1.
 6" x 5/8" thick hardened steel cutting edges: 2.
 Weight: 800 lbs.



Double Trip Sidewalk Plow



Specifications

Overall length of plow: 60".
 Overall height: 32".
 Cutting edge: 1/2" x 6".
 Angling: 30° left or right.
 Cylinders: 2 single acting.
 Mouldboard trip springs: 4.
 Cutting edge trip springs: 2.
 Overall weight: 700 lbs.



The Double Trip Sidewalk Plow is designed for use by municipalities that have a significant number of toe trips resulting in constant plow tripping. The double trip system trips the mouldboard 35 degrees and the cutting edge 40 degrees. With this type of trip system, the operator does not need to stop or slow down for the mouldboard and cutting edge to return to position. The tripping of this plow is also smoother than conventional mouldboard trip or cutting edge trip plows.

Angle Snowplows



The Trackless Angle Plow is available in four widths using the same push frame. It is a full trip-type plow where the blade tips forward and rides up over the obstruction.

Specifications

Blade length: 60", 72", 84", 96".
Blade height: 30".
Cutting edge: 1/2" x 6" hardened (replaceable).
Skid shoes: 2 adjustable.
Blade angling: 30° left or right by hydraulics.
Cylinders: 2 single acting with cushion valve.
Trip: Full blade trip, returns to upright position when blade assembly raised.

V Plow



The Trackless V Plow is designed for higher speed plowing. An ideal combination for many municipalities is the V Plow and Rear Mounted Spreader. Since the snow is split into two banks with some fall-back on each side, the cleared width is usually reduced from 49 inches to approximately 44 inches. The spreader then follows, laying down a 41 inch wide path of material.

Specifications

Width at bottom: 49", at wings 51".
Height at nose: 28", at wings 35".
Cutting edge: 1/2" x 6" hardened (replaceable).
Nose edge: 1/2" hardened plate (replaceable).
Down pressure may be used.

Rear Sidewalk Spreader

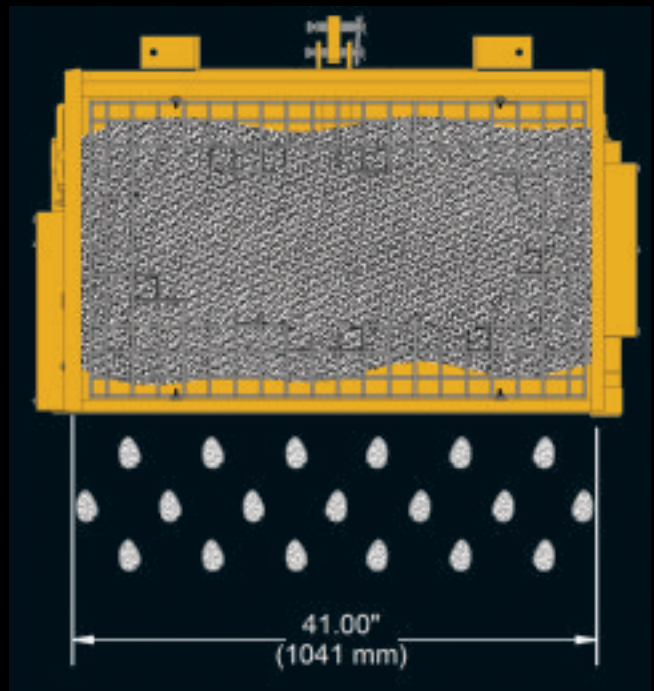


The Trackless Rear Mounted Spreader is used to apply salt, sand or a mixture. It is hydraulically driven and the amount of spread is controlled by an adjustment lever. As illustrated, the Trackless spreader conserves material by dispersing it evenly in a diamond pattern rather than a solid layer. The delivery roller maintains a 41 inch spread width. This prevents material waste as well as turf damage from salt, both of which can be a problem with spinner spreaders. As a result, reduced labour costs from fewer refills and lower material costs minimizes the overall cost of operation.

Three screw-jack stands enable one person to safely attach or remove the spreader without the aid of a lifting device.

A lid keeps moisture out and prevents salt and sand from being drawn into the engine compartment. To stop bridging of the material in the hopper, the sander now has three agitators instead of only one.

Many customers also sand walkways as they sweep the snow away. Since separate hydraulic systems power both the sweeper and spreader, they can be engaged or disengaged independently.



Specifications

- Total width: 45".
- Spread width: 41".
- Capacity: 1/2 cubic yard.
- Drive: Hydraulic.
- Screw jacks for removal: 3.
- Agitators: 3.
- Galvanized safety screen.
- Zinc plated lift hooks: 2.
- Spread distance: 3 to 8 miles.

Front Spreader and Plow



With the Trackless Front Sander/Plow, extra weight transfer to the front axle and material spread in front of the tractor for the tires to grip, increases traction significantly.

The unique “front and rear” concept also allows the tractor to carry two different materials, one up front and the other on the rear. Salt can be applied downtown where merchants do not want sand tracking into their stores and sand can be applied from the second spreader on the remaining residential sidewalk.

Specifications

Spread width: 41".
Capacity: 1/3 cubic yard.
Drive: Hydraulic, independent from rear spreader.
Plow width: 60".
Blade angling: 30° left or right.
Cutting edge: 1/2" x 6".
Overall length: 47" cab frame to front of plow cutting edge when plow straight ahead.

Dump Body and Rear Spreader



The Trackless Dump Body is an option for municipalities that wish to double the spread distance before having to refill. The operator spreads material until the rear salt and sand spreader is empty and then refills by hydraulically raising the dump body. The tailgate opens automatically and closes again once the dump body is lowered. After the winter season is over the dump body and its supporting frame can be unbolted and stored until the following winter.

Specifications

Dimensions: 67" long x 36" wide x 13" high.
Side panel construction: Corrugated profile for additional strength.
Lift angle: 42°.
Hydraulic cylinders: 2 – 14" x 2".
Tailgate: Automatic open/close when body raised or lowered.
Off-season storage: Complete unit removable (replacement hoods required).

Infrared Asphalt Heater

Quick, Cost-effective, Per



The Trackless Electric Infrared Asphalt Heater and Generator has been developed to replace traditional propane asphalt heaters with a completely different design concept. To replace propane an 80 HP generator powers electric elements.

Two Machines in One

When the asphalt heater is not in use it can be separated from the generator frame in less than five minutes by simply pulling four pins. The 80 HP generator produces 45 KW and 175 amp. It has both 110 V and 220 V receptacles. This will power welders, pumping stations, municipal buildings, emergency shelters, etc. The generator comes equipped with safety lockouts and security fencing for the tractor and generator.

No Open Flame

There is no open flame. Electric elements produce an even and controlled heat which will not burn the surface.

Controlled Cycle Times

Cycle times are controlled by a timer. Once you have established the optimum cycle time for the conditions you can use that as your baseline and bump the timer control up or down in two-minute intervals.

Simplicity of Operation

Very little training is required due to the simplicity of operation. The operator lowers the heater, sets the cycle time and hits the cycle start button. Simple, safe and no consumables to worry about.



and 45 KW Generator

manent Asphalt Repair



Eliminate:

- propane tank storage regulations
- training/license for changing propane tanks
- running short of tanks
- possibility of leaking valves or tank ruptures
- open flame in close proximity to propane tanks
- open flame over or near catch basins or man holes where methane gas or other flammable liquids or gases could be present.

Manoeuvrability

Since the heater is mounted in front of the tractor it is easier to manoeuvre than trailer units. With the precise control of the tractor's articulated steering, the operator can accurately position the infrared heater in areas where it would be too awkward to do so with a trailer unit.

Specifications

Heating pan area: 4' long x 6' wide.
Heating elements: 11.
Deflector shields: 8 stainless steel.
Insulation: 5" thick ceramic.
Control panel: LED screen for cycle time, cycle start button, timer jog, e-stop.
Generator output: 45 KW, 175 amp.
Receptacles: 110 V and 220 V.
LED screen: Cycles, hertz.
Fence: Four feet high to completely surround tractor and generator, includes gate.

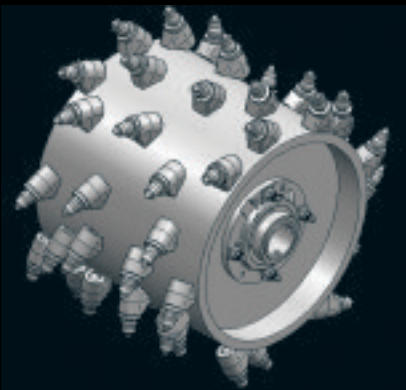
Generator may be purchased separately.



Cold Planers

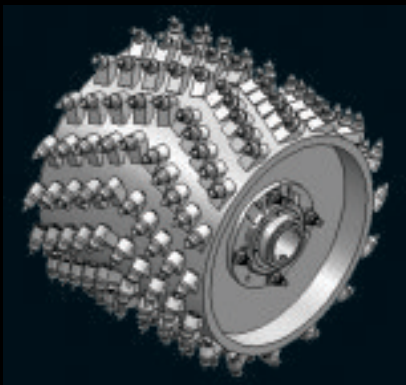


Asphalt Drum



The Asphalt Cold Planer is ideal for repairs to asphalt abutting manhole covers, curbsides, gutters and driveways. It is also used for pothole repair and utility cuts. The Trackless Series MT6 is available with a 10:1 planetary deep reduction transfer case which when shifted into deep low, gives the operator a speed range of 0 – 10 feet/minute. Achieving creeper gear speeds any other way may be less expensive but with Trackless deep reduction, the wheel torque is 10 times what it normally would be in low range. This provides smoother, surge-free asphalt or concrete milling with very precise control. Compare against all others to see the difference for yourself.

Concrete Drum



Toe Trip Milling vs. Costly Alternative



The Concrete Cold Planer has approximately three times as many picks and operates at a higher speed. The primary function of the concrete planer is to mill down sidewalk toe trips caused by frost heave and to mill wheelchair access ramps.

Specifications

Cutting width: 16".
Cutting depth: 0 to 6".
Number of picks: 50 for asphalt, 160 on concrete drum.
Hydraulic tilt, depth, side shift.
Drive: Double reduction planetary.
Weight: 1,750 lbs.

Loader



The Trackless Front End Loader Attachment is ideal for the lighter work required by Grounds Maintenance Departments. Before purchasing a skid steer loader or a small tractor/loader, consider the benefits and cost-savings of being able to mount our loader in approximately five minutes and when the work is completed, switch back to one of the Trackless mowers or other attachments.

Specifications

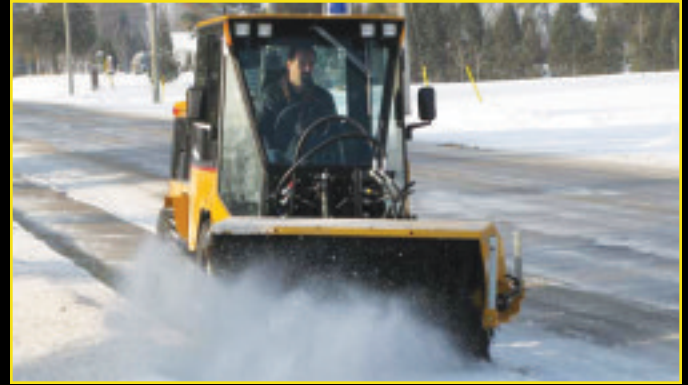
Lifting capacity: 1,200 lbs.
Bucket size: 1/3 cubic yard, 77" wide, optional 49".
Lifting height: 72".
Weight: 860 lbs.

Line and Stencil Painting



The Trackless Paint Attachment is used for both straight line painting and stencil painting. For straight line, simply remove the cart, set up the spray gun and proceed. For stencil painting, retrieve one of your stencils from the two stencil drawers, pull out the hand wand sprayer and hose reel and paint the arrow, handicap symbol, or what ever other symbol is required. Detailed specifications are available.

Power Angle Sweepers

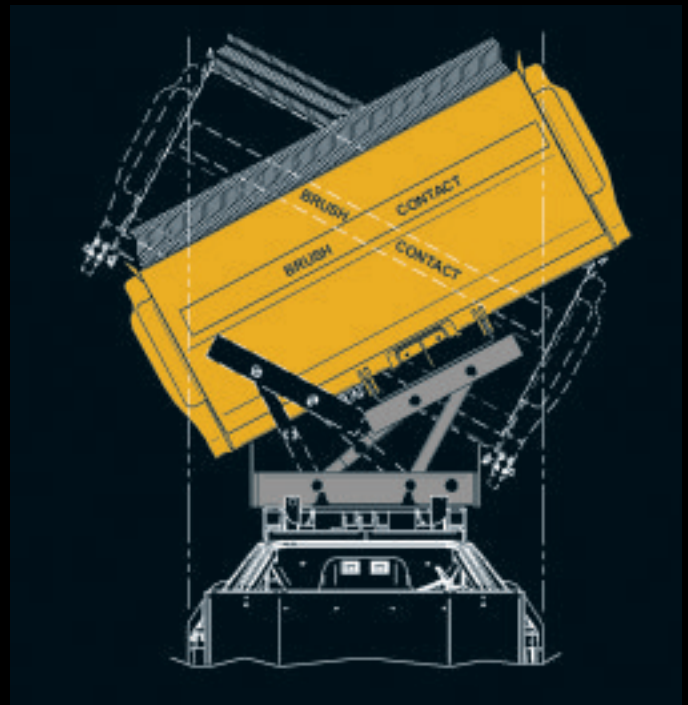


Scissor Frame Centers Brush Head

The Trackless Power Angling Sweeper may be utilized to perform a wide variety of tasks every month of the year. In addition to snow removal, sand, gravel or debris can be swept from sidewalks, parking lots, cul de sacs, intersections and other confined areas. Dethatching large lawns and playing fields is another ideal application for the angle sweeper. Many parks have a problem with goose droppings. Both the walkways and the lawn can be swept clean to the satisfaction of those who wish to enjoy nature, less just one element.

The high output hydraulic system of the MT6 powers the broom and a scissor frame automatically centers the sweeping pattern in front of the MT as it is angled.

The 60 inch angle sweeper is ideal for sidewalks as the sweeping pattern is 48 inch to 50 inch when angled. There are also 72 inch, 84 inch and 96 inch models available for parking lots, etc. For customers who require a very narrow sweeper due to a narrow bridge etc., 36 inch or 48 inch sweepers can be made to order.



Pickup Sweeper



The Trackless Pickup Sweeper is ideal for sidewalk cleaning in the spring to remove the sand accumulation from winter. It is driven for one or more blocks and hydraulically dumped by a bottom gate. Best results are obtained by using the spray bar and rear-mount water tank.

Specifications

Sweeping width: 48".
Main body dimensions: 53" wide x 40" high x 50" long.
Broom diameter: 32".
Casters: 3 swivel casters, hard urethane tires.
Dump: Bottom gate, hydraulic controlled.
Drive: PTO to gearbox, shaft to right side, 60 chain to broom sprocket.
Capacity: Approximately 6 cubic feet.

Spraying Systems

A dust control Spraying System is recommended for use with sweepers. It consists of a rear-mounted 80 U.S. gallon tank with 12 V pump, relief valve and hoses. All MTs have electric wiring, hose and switch installed, ready for this system. A front spray bar kit must be ordered separately for each type of sweeper. A variety of different spray bars are also available for spraying salt brine, magnesium chloride, calcium chloride, etc.



A 14 foot wide boom is available which mounts on the rear of the water tank frame. When spraying a lawn, marking your way is easily achieved by simply cutting the grass at the same time. As you cut the 14 foot wide swath, you spray the same 14 feet. When finished, the boom folds inward. The boom has a break away system for forward and reverse. The system includes an adjustable relief valve and gauge for adjusting spray pressure, a pressure filter and plastic no-drip nozzles with internal poppet valves.



74" Flail Mower



The Trackless All Purpose Heavy Duty Flail was designed to cut grass, weeds and light brush whether on smooth lawn or rough terrain. The weight and shape of the blades allow the mower to cut and mulch light brush, shrubs and weeds. A unique feature of the Trackless flail mower is its flexibility, front to rear. This ensures an even cut and no turf damage when cutting up and over knolls. It also prevents the need to raise the mower when approaching a hill.

Specifications

Cutting width: 74".
Cutting height: 1" to 4".
Gauge wheels: 2 – 16" x 4" semi-pneumatic.
Gauge roller: 6" diameter steel, full width.
Rotor tube: 4" diameter with 1-7/16" shaft.
Blades: 33 – 2-3/4" wide (can be resharpened).
Blade and rotor cutting diameter: 18".
Drive: PTO, gear box, cross shaft, 2 V-belts with spring-loaded idler pulley.
Rear deflector: Reinforced rubber.
Linkage: Flexible for uneven ground.
Rotor speed @ 540 PTO: 1,780 r.p.m.
Blade tip speed @ 540 PTO: 8,380 ft./min.



Aerator

The Trackless Front Mounted Aerator is far easier and safer to operate than a tow behind aerator. Simply steer the tractor and the pivoting tine wheels turn with the tractor. Raise the aerator, shift the MT into high range and travel to the next work site, eliminating the inconvenience and expense of having to trailer the equipment.

Specifications

Aerating width: 72".
Pivoting tine wheels: 12.
Tines: 120 – 3/4" closed type.
Aeration pattern: 5.5" x 6.5".
Total weight: 1,050 lbs.



Boom Flail Mower



Almost every municipality has several areas which are difficult, unsafe or impossible to mow. Ditch, steep incline, over guard rail and waters-edge cutting become problems of the past once the Trackless Boom Flail enters the scene.

Trackless Boom Flail advantages include:

- 1) Better visibility than side or rear mount boom flails resulting in less operator fatigue and safer operation.
- 2) Can be removed from the Trackless MT6 in approximately 10 minutes. Within minutes another attachment can be installed and the operator can be on the way to another job site.
- 3) Hydrostatic control of the ground speed allows the operator to react more quickly when approaching an obstruction. It also allows the operator the ability to constantly vary the ground speed, as necessary, without shifting gears, which results in higher productivity.
- 4) Compact size of the Trackless MT6 and boom flail interferes with passing traffic less than larger agricultural-type tractor/mower combinations. The compact size is also beneficial when transporting to and from the job site.

Specifications

Width of cut: 51"; overall width of head 64-1/2".
Horizontal reach: Center of MT6 to outside cut 13-1/2'.
Below grade cut: 53".
Vertical reach: 13-1/2'.
Overall level ground cutting coverage: 11', starting 5" inside outer tire.
Number of cutting blades: 36.
Weight: wet and with counterweights – 1,960 lbs.



Rotary Finishing Mowers

Trackless 72" Rotary

The Trackless front mounted 72 inch rotary mower is designed for close trimming on both sides with a full width rear discharge. Four large gauge wheels and flexible attaching frame allow accurate cutting on rolling ground. Due to the MT6's hydrostatic transmission, maximum speed of cutting can be maintained in various cutting conditions by simply easing up on the foot pedal in heavier grass or depressing the pedal further for a faster ground speed where grass is shorter. Articulated steering gives the operator precise control for trimming.



Trackless 120" and 168" Rotary

The Trackless wing type mower was designed to drastically cut mowing time on large areas such as campuses and parks. Normal undulating ground requires flexibility in mowers to avoid scalping. Trackless solved this problem with a three-section, front mounted mower comprised of a 72 inch three-spindle, PTO driven center section with a hinged hydraulic driven wing on each side. Separate valves control each hydraulic motor and lift cylinder. The MT6 has a built-in hydraulic system to power the right wing and an optional pump and valve to power the left wing. Safety switches shut off the wings automatically when raised. For side slope cutting, axle extensions and terra grip turf tires are available.



Specifications

Deck: 72" – 3/16" plate, rear discharge.
Spindles: 3 – Timken bearings, greaseable.
Blades: 3 – 25" x 2-1/2" x 1/4" high lift.
Casters: 4 swivel with 4" x 10" pneumatic tires.
Drive: PTO to right angle gear box, 2 V-belts.
Cutting heights: 1-1/2" to 4" in 1/2" increments.
Cutting tip speed: 18,500 f.p.m. @ 2,200 engine r.p.m.

Wings: 24" or 48".
Caster: 1 – 4" x 10" pneumatic on 24" wing; 3 on 48" wing.
Roller: 1 gauge on 24" wing only.
Hydraulic motor drives spindle by V-belt.
Lift cylinder: Hydraulic – 2" x 8".
Hinge: Compound – 110° ARC..



Sickle Bar and Under Guard Rail Mowers



The Sickle Bar Mower and Under Guard Rail Mower are two alternate methods for roadside cutting.

Specifications available upon request.

Leaf Loader

The Trackless Leaf Loader is the most advanced and efficient leaf loading machine on the market today. Leaves are picked up at curbside, mulched and blown into a truck. Advantages include:

Faster Pick Up, Less Personnel

Most customers, at the end of their leaf pickup, claim to be three to four weeks ahead of schedule, due to the ability of the Trackless Leaf Loader to load up to four trucks per hour and 100,000 pounds per day.

Mulching

Even though leaves represent up to 20% of municipal solid wastes, states such as New Jersey and many communities have banned leaf disposal by land filling or incineration. As others follow, mulching/composting will soon become mandatory as the first step in leaf disposal or recycling.

Heavier Loads and Fewer Trips

Each loaded truck contains far more material, due to the leaves being mulched. Customers have reported loading 100,000 pounds per day.

Recycling

Mulch can be sold or offered free of charge to landscapers and the general public for their gardens, flower beds, etc. Although the demand may not be large enough to recycle 100% of the mulch generated, the demand will increase every year, once a program is implemented.

No Bad Weather Days

Due to the heated cab, rain, snow or cold weather does not effect the operator's willingness to work. Furthermore, none of these conditions effect the Leaf Loader's ability to pick up the leaves even if they are stuck or frozen to the asphalt.

No Physical Labour

The operator simply stays in the cab and lets the Leaf Loader do the work. As with any job where physical demands are high, total mechanization can easily double, if not quadruple, productivity.

Less Traffic Congestion

The Trackless Leaf Loader and truck operate close to the curb, minimizing disturbance to traffic flow.



Specifications

Throat opening: 72" x 35" high.

Mulching rotor: Full width with 144 knives.

Beater bar feed roller: 18 pairs of spring base type tines.

Intermediate feed roller: 32 tines, eccentric rotation.

Cross auger: 14 inch diameter.

Blower fan: 32" x 7" with three replaceable paddles and knives.

Drive protection: Torque limiting clutch on PTO shaft, over running clutch in gearbox.

Drive: PTO driven rotor and blower fan, hydraulic driven beater bar feed roller, intermediate feed roller, and cross auger.

Specifications

ENGINE		STD	OPT
Cummins Model	QSB4.5		
Displacement	274. 5 cubic inch, 4.5 litre	std	
Horsepower	115 BHP @ 2,500 r.p.m.		
Torque	360 lb-ft @ 1,500 r.p.m.		
Tier 3 electronic	with charge air cooling		
Equipped with cold start aid, block heater		std	
Air breather warning lamp		std	
Engine oil pan heater			opt 42
P.T.O.			
Front PTO	1-3/8" 6 spline, 540 r.p.m.	std	
Rear PTO	1-3/8" 6 spline, 540 r.p.m.		opt 6
Twin Disc over center clutch with electric over hydraulic actuation		std	
Reduction box 4:1		std	
HITCHES			
Front	Trackless quick hitch with dual lift cylinders	std	
Rear	Category 1, 3-point hitch with anti sway bar		opt 7
POWERTRAIN			
Sauer Danfoss hydrostatic / electronic transmission and motor		std	
Control by electronic foot pedal programmed to control hydrostatic independently or both engine r.p.m. and hydrostatic simultaneously		std	
Trackless mechanical transmission with high / low range and neutral		std	
High range lockout to prevent operation of attachments in high range			opt 8
10:1 deep reduction planetary transmission. When coupled to mechanical transmission, 4 speed ranges instead of 2. Deep low is 0 - 10 feet / minute			opt 9
Dana Model 60 full float axles with new heavy duty alloy spindles Limited slip differentials 7,000 lb capacity.		std	std
Electric locking differentials front and rear with independent switches When not engaged, differentials revert back to limited slip. Lockers will not engage when in high range.			opt 10
Axle extensions for side slope mowing			opt 11
HYDRAULIC SYSTEMS			
20 gpm hydraulic gear pump driven by timing gears of engine		std	
14 gpm hydraulic gear pump, only driven when PTO clutch engaged			opt 12
Joystick control with 8 backlit membrane switches. 3 float position switches also have additional LED indicator lights. Switches colour coded to circuits.		std	
6 (3 pair) low volume front hydraulic couplers for attachment control		std	
2 (1 pair) high volume hydraulic couplers to power attachments requiring approximately 16 gpm		std	
2 (1 pair) additional ports in front of cab for addition of optional second high flow circuit		std	
2 (1 pair) high volume hydraulic couplers at rear of tractor		std	
2 (1 pair) high volume hydraulic couplers in front of cab Supplied if option 12 (optional pump and valve) purchased			opt 12
Cartridge type hydraulic filter mounted at highest point in system to allow dry changes		std	
Thermostatically controlled bypass from oil cooler for winter start up		std	
Steel hydrostatic lines		std	
Low hydraulic oil warning			opt 20
Hydraulic oil tank heater			opt 21

TIRES & WHEELS		STD	OPT
31 x 10.00 x 16.5	8 ply loader lug tires on HD 16.5" 8-bolt rims	std	
LT 245/75R x 16	10 ply radial winter tire on HD 16" 8-bolt rims		opt 1
32 x 13.50 x 15	4 ply turf tires on HD 15" 8-bolt rims		opt 2
Dual loader lug tires (8) mounted on 8 rims			opt 3
Calcium fill			opt 4
Calcium fill in tubes			opt 5
BRAKING SYSTEMS			
Hydrostatic dynamic braking programmed for smooth deceleration		std	
Hydraulic service brakes on all 4 wheels		std	
Service brake application also activates more aggressive hydrostatic braking		std	
Mechanical parking brake with warning buzzer		std	
FUEL CAPACITY			
104 litres, 27 U.S. gallons		std	
SPEEDS			
Low range	0 to 8 mph	std	
High range	0 to 19 mph	std	
Deep low range	0 to 10 feet / minute		opt 9
LIGHTS			
4 - Halogen headlights		std	
1 - Halogen backup light		std	
2 - Rubber mounted shockproof tail lights		std	
1 - Interior dome light		std	
Front and rear signal lights and 4 way flashers		std	
1 - Blue or amber strobe mounted on adjustable pedestal with quick disconnect twist lock wiring plug		std	
Second strobe light			opt 13
Strobe per customer specification			opt 14
Second rear backup light			opt 15
Additional high mount rear tail lights			opt 16
LED tail lights and signal lights			opt 17
Headlight, signal / marker light guards			opt 18
STEERING			
Articulated steering 35 degrees each way		std	
Hydraulic orbitrol motor, hydraulic steering cylinder, tilt steering column		std	
Inside turning radius approximately 8 feet		std	
Steering column includes hazard button, signal lever, center mounted horn		std	
High strength spherical bearings for pivot pins and steering pins		std	
Bearings and pins greasable		std	
FINISH			
All steel components including cab prepped in 5 stage phosphate wash. 2 part epoxy primer with rust inhibitor, 2 part poly urethane automotive top coat oven baked.		std	
Latches, linkages, levers, battery hold down straps & bolts, support rods, striker plate, shifter gate and various small brackets zinc plated		std	
Colour highway yellow with black trim, grey / black interior		std	
Custom colours to customer specification			opt 19

Specifications

CAB FEATURES	STD	OPT
Certified R.O.P.S. cab structure Steel roof with rain gutters	std std	
Full gauges: tachometer, speedometer, fuel level, engine coolant temp., hydraulic oil temp., engine oil pressure, voltmeter, hour meter	std	
3-speed heater defroster	std	
Air conditioning with auxiliary heat and pressurization		opt 22
2 outside and 1 inside rear view mirror 3-point retractable seat belt	std std	
AM / FM / CD stereo, dual speakers, internal aerial with amplifier	std	
Ash tray, cup holder, cell phone holder, door pocket, storage tray	std	
12 volt power point auxiliary outlet for cell phone 12 volt 2-way radio jacks	std std	
Fire extinguisher Log book case		opt 23 opt 24
Gas strut door cylinder and safety strap Tilt steering column with horn, signal lever, hazard button	std std	
DOT approved tinted tempered safety glass Left and right side slider windows	std std	
Rear slider window		opt 25
3-speed pantograph wiper and windshield washer	std	
Intermittent front wiper		opt 26
Rear wiper and washer		opt 27
Conaflex sound deadening, sound barrier floor matting	std	
Operator's manual High back, fabric covered air ride seat with lumbar support	std std	
Adjustable left arm rest, right adjustable free swing joystick arm rest	std	
Cigarette lighter		opt 28
2-way radio to customer specified frequency Backup camera		opt 29 opt 30
Atrol 2 tachograph Slopemeter		opt 31 opt 32
EXTERIOR FEATURES		
Dump body with hydraulic lift and automatic tailgate		opt 33
All steel hoods, four hinged access doors, hinged rear grill	std	
Locking hoods Locking fuel cap		opt 34 opt 35
Heavy duty 10 gauge steel fenders 4 heavy duty tie down D rings	std std	
SMV - slow moving vehicle sign		opt 36
Pintle hitch 2-5/16 inch ball hitch		opt 37 opt 38
Rear license plate bracket and light Grease / lubrication chart decal under hood	std	opt 39
ELECTRICAL		
950 CCA group 31 battery, 95 amp alternator	std	
Hinged overhead switch panel	std	
Main circuit breaker protection	std	
Mini blade fuses mounted in IP76 watertight enclosure	std	
Switch, wiring and plumbing for spray systems	std	
CAN wire to front plug to control engine r.p.m. from external source such as generator / infrared	std	
Electric brake control 7 prong trailer plug		opt 40 opt 41

SAFETY FEATURES	STD	OPT
Neutral safety start switch	std	
Automatic hydraulic power shut offs if rotary mower wings raised	std	
Automatic PTO shut down if operator leaves seat	std	
Automatic engine shut down if operator leaves seat with shifter not in neutral position	std	
Recognition of generator / infrared automatically triggers additional safety interlock system to allow unmanned operation	std	
Application of service brake foot pedal activates more aggressive hydrostatic braking in conjunction with the 4 wheel service brakes	std	
Wire finger guard protection from engine fan blades Reflective striping on both sides and rear of tractor	std std	
Pinch point, danger, caution decals Backup alarm	std std	

DIMENSIONS / WEIGHTS

Overall length including rear bumper	146.5 inches
Height to top of cab (add 8-3/4" for air conditioning)	80.0 inches
Track width with standard loader lug tires	49.5 inches
Overall width including fenders	50.5 inches
Weight with oils, coolant and full tank of fuel	2,830 kg 6,240 lb

ATTACHMENTS

	REQUIRED OPTIONS	SUGGESTED OPTIONS
14 foot rotary mower	12, 2	22
10 foot rotary mower	12, 2	22
6 foot rotary mower	2	22
Sickle bar mower	2 or 3	22
Under guard rail mower	2 or 3	22
Asphalt cold planer	12, 9	22
Concrete cold planer with Ranjo drum	12, 9	22
Leaf shredder / loader	12, 9, 3	
45 KW generator and security fencing		
Electric infrared asphalt heater		
3, 4, 5, 6, 7, or 8 foot wide hydraulic driven angle sweeper	12	22
50, 60, or 72 inch V plow		
5, 6, 7, or 8 foot wide angle snow plow		10
5 foot wide double trip snow plow		10
5 position folding V plow		10
51, 60, 70 or 80 inch snowblower		
Rear salt and sand spreader		
Front sander and plow combination	12	
80 gallon 300 litre brine spray system		
51 inch heavy duty boom flail	3	22
48 inch pickup sweeper		22
Water tank and pump system		
74 inch front mounted flail mower	2 or 3	22
Front mounted aerator	2	
Front mounted loader 49 inch bucket		2
Front mounted loader 72 inch bucket	2 or 3	
Paint marking / striping attachment	2	

THE



Trackless

TEAM "AT YOUR SERVICE"

Wheel and Tire Selection



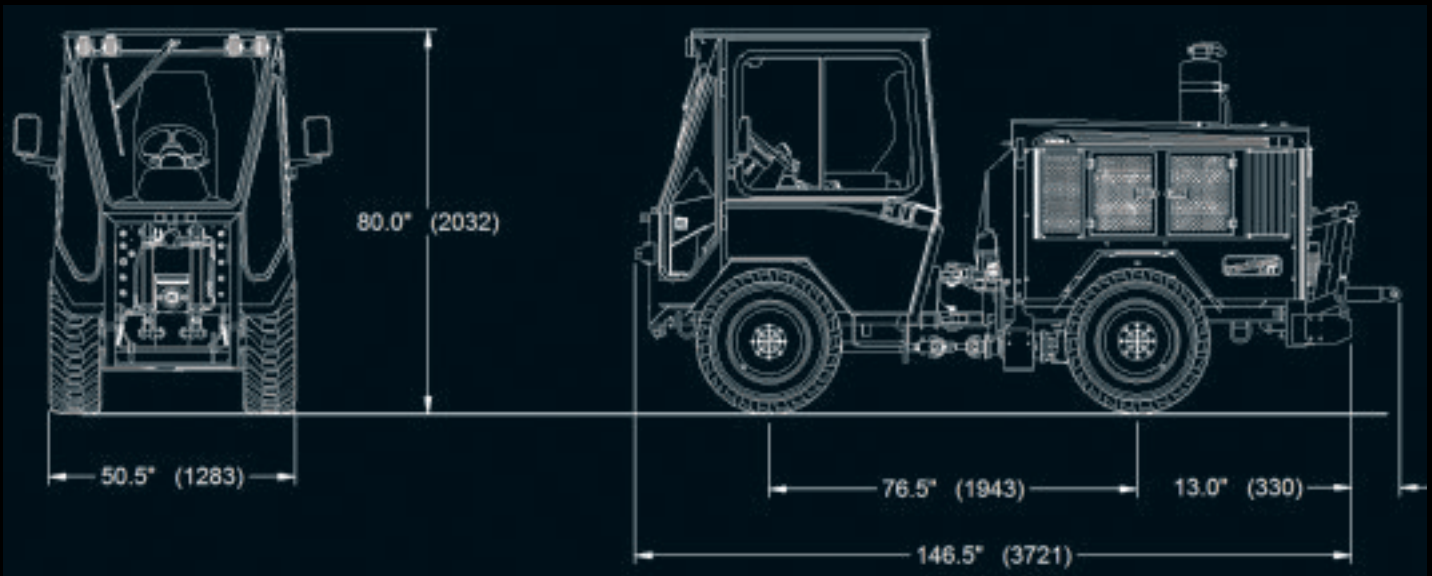
32 X 13.50 X 15
Summer Turf
Option 2

31 X 10.00 X 16.5
Loader Lug
Standard Equipment

31 X 10.00 X 16.5
Dual Loader Lug
Option 3

LT 245 / 75R X 16
Winter Radial
Option 1

32 X 15.5 X 15
Tera Grip Turf
Option 2-1
(with axle extensions)
(Option 11)



TRACKLESS VEHICLES LTD.

55 THUNDERBIRD DRIVE
P.O. BOX 244, COURTLAND, ONTARIO
CANADA N0J 1E0
PHONE (519) 688-0370
FAX (519) 688-3644
www.tracklessvehicles.com

SOLD AND SERVICED BY

